



**HOSANNA LUTHERAN CHURCH**

Physical Address: 222 South Jefferson Avenue, Covington LA 70433

Mailing Address: PO Box 1477, Mandeville LA 70470

Phone Number: (985) 727-9200

Email: [office@hosannalutheran.com](mailto:office@hosannalutheran.com)

GET CONNECTED: CLICK ANY LINK

[hosannalutheran.com](http://hosannalutheran.com)

 [facebook.com/hlcpage](https://facebook.com/hlcpage)

*Hosanna begins it's new chapter on June 1st.*



Thanks to Covington Presbyterian Church, Hosanna has a place to continue on with its ministry. We are grateful for the opportunity to nest at 222 S. Jefferson Avenue in Covington. Although, much will change in the coming months, Hosanna will continue to *love like Jesus through prayer, nourishment, inclusivity, community service & creative reinvention.*

If you ever have questions or need anything during this time of transition, please don't hesitate to reach out to the office staff. We are here to answer your questions along with the council members.

We look forward to partnering with Covington Presbyterian on multiple fronts. This includes, Hosanna Hot Meals, combined Sunday School between services on Sunday and more! as things develop. There are lots of opportunities to get involved after our move. Check out the newsletter or Hosanna Happening emails for the most up to date volunteer opportunities.

We are extremely excited to announce that Pastor Candy O'Meara has accepted the Redevelopment call to Hosanna Lutheran Church! We should expect her and her puppy to arrive late June!

**WELCOME**

**Pastor Candy O'Meara**



**HELLO  
SUMMER!**





**HOSANNA LUTHERAN CHURCH**

Physical Address: 222 South Jefferson Avenue, Covington LA 70433

Mailing Address: PO Box 1477, Mandeville LA 70470

Phone Number: (985) 727-9200

Email: [office@hosannalutheran.com](mailto:office@hosannalutheran.com)

GET CONNECTED: CLICK ANY LINK

[hosannalutheran.com](http://hosannalutheran.com)

 [facebook.com/hlcpage](https://facebook.com/hlcpage)

## NOTES & NEWS

Join the Hosanna Family  
at 9:00AM

Or watch on Facebook  
[www.facebook.com/hlcpage](http://www.facebook.com/hlcpage)

### Have you heard?



Beginning June 1st Hosanna will be nesting at Covington Presbyterian.

Our new address is:

222 S. Jefferson Avenue, Covington, LA 70433.

Our new MAILING address is:

PO Box 1477, Mandeville, LA 70470

# June 2022

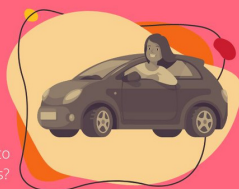
Church Calendar  
Click [HERE](#) for the online church calendar

- MAY 29 9:30am FINAL SERVICE @ 2480 Highway 190
- MAY 30 OFFICE CLOSED  
NO HOSANNA HOT MEALS  
Hosanna Faith @ 2480 Highway 190
- MAY 31 Office Hours: 8:30am-1:30pm @ 222 S. Jefferson
- JUNE 1 JOY @ Rachael Moore's House 10am
- JUNE 5 11AM!!! JOINT SERVICE WITH COVINGTON PRES.
- JUNE 6 Hosanna Hot Meals @ 222 S. Jefferson  
Hosanna Faith @ 2480 Highway 190
- JUNE 12 9am Service @ 222 S. Jefferson Ave  
9:45am Sunday School
- JUNE 13 Hosanna Hot Meals @ 222 S. Jefferson  
Hosanna Faith @ 2480 Highway 190
- JUNE 15 JOY @ Rachael Moore's House 10am
- JUNE 19 9am Service @ 222 S. Jefferson  
9:45am Sunday School  
FATHER'S DAY!!
- JUNE 20 Hosanna Hot Meals @ 222 S. Jefferson  
Hosanna Faith @ 2480 Highway 190
- JUNE 26 9:30am Service at 222 S. Jefferson  
9:45am Sunday School
- JUNE 27 Hosanna Hot Meals @ 222 S. Jefferson  
Hosanna Faith @ 2480 Highway 190
- JULY 3 9:30am Service @ 222 S. Jefferson  
9:45am Sunday School
- JULY 4 Happy 4th of July!!  
NO HOSANNA HOT MEALS  
NO HOSANNA FAITH

HOSANNA LUTHERAN CHURCH

## DRIVERS NEEDED

YOUR NEIGHBORS  
NEED HELP!



Are you willing to drive members from Mandeville to our new location in Covington on Sunday mornings? Please contact the office!!  
If you need a ride, please also contact the office or specify on your connection card.

## Yard Work Help AT OUR NEW LOCATION!

Covington Presbyterian's Yard Work group is looking for more members! If you are interested in helping with outdoor maintenance at our new location, contact the office. This group typically meets Fridays and/or Saturdays.





**HOSANNA HOT MEALS IS STILL COLLECTING DONATIONS FOR THEIR GAS FUND!**

### Hosanna Hot Meals Gas Fund

Hosanna Hot Meals would like to purchase gas cards to be donated to their delivery drivers to help offset the increasing gas prices.



Our volunteers don't just give us their time and effort! Our drivers pay for their own gas as they go around St. Tammany Parish delivering meals! Please write "Hosanna Hot Meals Gas" on checks or envelopes.

### HOSANNA LUTHERAN CHURCH

Physical Address: 222 South Jefferson Avenue, Covington LA 70433  
Mailing Address: PO Box 1477, Mandeville LA 70470  
Phone Number: (985) 727-9200  
Email: office@hosannalutheran.com  
GET CONNECTED: CLICK ANY LINK

[hosannalutheran.com](http://hosannalutheran.com)  
 [facebook.com/hlcpage](https://facebook.com/hlcpage)

**MEALS ARE EVERY MONDAY!  
VOLUNTEER OPPORTUNITIES AVAILABLE!**



**GRAB-N-GEAUX...  
PICK UP DINNER  
EVERY MONDAY: 4:00-5:00PM**

Hosanna Hot Meals has started serving meals at our new location:  
222 South Jefferson Avenue, Covington, LA 70433  
See you there!!

**WISH TO HELP?  
SIGN UP TO PROVIDE DESSERT ITEMS, VOLUNTEER TO HELP THE KITCHEN CREWE OR DELIVER MEALS**

222 South Jefferson Avenue, Covington, LA 70433

## RECENT SUCCESSSES

THANK YOU TO EVERYONE WHO HELPED WITH THE YARD SALE AT THE END OF APRIL! WE MADE AROUND \$3,000 AND BROUGHT OUR MOVING COST DOWN BY \$10,000!

THE GET TO KNOW YOU FISH FRY WAS A HUGE SUCCESS! THERE WERE ABOUT 80 PEOPLE TOTAL  
THANK YOU TO STEVE BEENE FOR PROVIDING THE SUPPLIES TO FRY THE FISH AND FOR CHARLES AND LOUANN STONE FOR HELPING SERVE, SET UP AND CLEAN UP! THANK YOU TO COVINGTON PRESBYTERIAN MEMBERS FOR PROVIDING DRINKS, DESSERTS AND DECORATIONS. IT WAS A GREAT FELLOWSHIP EVENT AT OUR NEW LOCATION AND WE LOOK FORWARD TO MANY MORE OPPORTUNITIES TO GET TO KNOW THE PEOPLE OF COVINGTON PRESBYTERIAN.

**HOSANNA HOT MEALS IS LOOKING FOR DESSERTS! IF YOU CAN MAKE OR BUY DESSERT FOR THIS MINISTRY SIGN UP WITH THIS LINK!**



**DESSERT PROVIDERS NEEDED**

Make For Hosanna Hot Meals


Click the "MAKE A MEAL" LINK IN THE OFFICE

## UPCOMING SERVICES FOR HOSANNA!

SUNDAY, MAY 29TH AT 9:30AM- AT 2480 HIGHWAY 190

SUNDAY, JUNE 5TH AT 11AM- A COMBINED SERVICE w/ COVINGTON PRESBYTERIAN AT 222 S. JEFFERSON

SUNDAY, JUNE 12TH AT 9AM- OUR NEW REGULAR SERVICE TIME AT 222 S. JEFFERSON AVE



Hosanna on the Move  
222 S Jefferson Ave,  
Covington  
Worship service  
9am Sundays

Come and see what God has in store for us next!

**Hosanna Lutheran Church**

# Hosanna Highlights

**Grace Schneider**  
Office Manager



**Nicole Gunn**  
Bookkeeper/Assistant



**Office Hours in June and July will be week by week. Check Hosanna Happenings or Sunday announcements for the most up to date office hours. Sorry for the inconvenience.**

## DID YOU KNOW?

Amazon donates 0.5% of the price of your eligible AmazonSmile purchases to Hosanna Lutheran Church!! Support your church by starting your shopping at [smile.amazon.com](https://smile.amazon.com).



[CLICK HERE](#) to start supporting Hosanna through AmazonSmile

## ONLINE RESOURCES

### ONLINE COMMUNITY

[Online Church Calendar](#)

[Find a Group List](#)

[Online Directory \(Log in required\)](#)

[Online Giving](#)

[Register for Events or Classes](#)

Many thanks to all Hosanna members who sewed bags and donated items for this May 20th delivery of 25 filled Card Bags to Mary Bird Perkins Cancer Center in Covington.

Linda Busfield



## HOSANNA QUILTERS

Will continue to meet after our move in June! For more information about time and Rides contact THE OFFICE OR **DEBBIE COLEMAN**



## Prayer Requests



HOSANNA

To submit prayer requests [CLICK HERE](#):

## 3 Ways to Give



ONLINE

[WWW.HOSANNALUTHERAN.COM](http://WWW.HOSANNALUTHERAN.COM)

Click "Give" on right side



MAIL

PO Box 1477  
Mandeville, LA 70470



SMART GIVING

Text 'hosannalutheran'  
to 77977

Online giving through Pushpay



Hosanna Christian Preschool's legacy continues on! Hosanna Lutheran Church was unable to move forward and continue the ministry of the Preschool. But we are so happy to announce Hosanna Christian Preschool's name and location change to New Beginnings Church Connection Preschool!! Same teachers, same great curriculum. We hope to see many of our students at the new location this September! REGISTRATION IS OPEN!!! NEW NUMBER 985-892-8003 ask for Tara Boynes or Mandy Slye!!



Director- Tara Boynes  
New Beginnings Church  
Connection Preschool




# HOSANNA CHRISTIAN PRESCHOOL

## LAST GRADUATION!!





**HOSANNA LUTHERAN CHURCH**

Physical Address: 222 South Jefferson Avenue, Covington LA 70433  
 Mailing Address: PO Box 1477, Mandeville LA 70470  
 Phone Number: (985) 727-9200  
 Email: office@hosannalutheran.com  
 GET CONNECTED: CLICK ANY LINK  
[hosannalutheran.com](http://hosannalutheran.com)  
 [facebook.com/hlcpage](https://facebook.com/hlcpage)

**CHURCH COUNCIL**

Council Meeting Minutes below.

**2022-23 COUNCIL OFFICERS**

Rob Rhea- President  
 Bob Busfield- Vice President  
 Nathan Hoffman- Treasurer  
 Rachael Moore- Secretary

**HOSANNA LUTHERAN CHURCH  
 COUNCIL MEETING  
 MINUTES  
 Date: APRIL 21, 2022**

2022-2023 Council Members:

Steve Beene  
 Bob Busfield- Vice President  
 Marie Growden  
 Nathan Hoffman- Treasurer  
 George Michell  
 Rachael Moore- Secretary  
 Marc Reed  
 Rob Rhea- President  
 Charles Stone

Call to Order: The meeting was called to order at 6:36 PM by Rob Rhea.

Members Present: Rob Rhea, George Michell, Rachael Moore, Charles Stone, Nathan Hoffman, Marie Growden, and Pastor Jerry Mansholt. Bob Busfield joined via zoom.

Members Absent: Steve Beene, Marc Reed.

Approval of Minutes: Approval of March 17th minutes deferred this meeting.

Church Move: Atmosphere Movers will be requested to move us week of May 23rd. Everything must be packed up, identified as to be packed by Atmosphere Movers prior to that date. Nathan will have them re-estimate cost of move after that.

Storage will be at Red Dot on Hwy 59, 10X25 foot climate-controlled storage for \$360.00/month. George did estimate on purchase of new chairs. It will cost more to store chairs than purchase new ones when we need them again. A motion was made by George to attempt to locate another church in need of chairs and donate them to that church. Marie seconded. Motion passed unanimously.

Hosanna will store the following items: Altar, Stained glass, musical instruments, Cross behind altar, Baptismal Font. Heather Putnam has agreed to store the piano at her home. George moved that we allow Heather to hold the piano for Hosanna. Marie seconded. It was noted that Hosanna would bear the cost of moving and re-tuning the piano by the person who currently tunes the piano. Motion passed. Kitchen freezer(s) and refrigerators will need to be moved to CPC.

Plan to use altar furnishings at CPC and store our altar linens. We will take our communion ware and elements for use there.

The pre-school will pack up their items to move and will coordinate their move with ours on the same day.

Items to remain at Hosanna: some kitchen appliances (ovens, microwave), AV Booth equipment, projectors, and screens.

A discussion was held about items for the Moving Sale. Sell if possible, or leave for Field Church: Christmas decorations, Ice maker (currently have a possible buyer for it), Kitchen, pantry, Bathroom closet in Prayer Room (clean out, sell, or store a few items), desks and office furniture (if not needed at CPC). Moving sale to be coordinated by Charles, LouAnn, and Nicole. An announcement for help will be made this Sunday. It was suggested that instead of moving items to the yard for the sale, that flyers be made noting the large items (furniture) available for sale. Then each room with available furniture can have a list posted on it with furniture available in that room.

An extra dumpster will be arranged to be put in the parking lot for the next month to dispose of unwanted or broken items.

Re-development Pastor: Pastors Candy O'Meara and Chris Markert will be in Mandeville the weekend of 5/7 of 5/8. Pastor Candy will preach on Sunday, 5/8. She will stay a couple of extra days on Monday and Tuesday after she finishes her official visit with Hosanna. George will set up a schedule for her to meet with staff, council, church members, and Pastor Jeff at CPC. Rachael will assist her in touring the area. She will be invited to Hosanna Hot Meals Monday afternoon if she wants to come.

Guest Pastors for May and Beyond, as needed: George will schedule guest pastors for May and beyond as needed. He will arrange for Pastor Jeff to give one service. Other clergy might include the Episcopal Priest who is a Hospice Chaplain and Jared Banks. It was noted that we would not have communion if Jared officiates since ELCA is not in communion with his denomination.

Pastor's Report: Pastor noted this is his last council meeting to attend. He noted he had no idea how many changes Hosanna would go through during these 15 months he has been here, noting that leaving is bittersweet and that there are still so many things and unknowns going forward. He will continue to pray for Hosanna. He will be leaving after the service on 5/1/22 for his home in Wisconsin.

Treasurer's Update: A budget has been completed and is updated at least monthly to reflect the current situation. Synod has been notified about the mission share Hosanna plans to contribute for 2022. It will be 10% of projected annual giving (approximately \$20,000).

CPC Update: The stove and the oven at CPC has been checked out and is in good working order. Grace will work with CPC to get our phone transferred using Spectrum to one of the available lines at CPC. There may be an additional cost in this. We will be able to use their internet. The AV person at CPC will be approached by Pastor Jeff to see if he has any interest in operating the AV for Hosanna services. The Coordinating Council will need 3 members from both CPC and HLC and will meet quarterly. George volunteered to be on the committee. A discussion was held regarding the increasing cost of utilities and that CPC may need to increase monthly rent before too long. A strategy to evaluate the amount of the increase was discussed.

Field Church: Financing is in place for the sale. Hosanna still has a backup buyer still in place who has bid \$2 million.

Adjournment: George motion the meeting be adjourned. Marie seconded. Motion passed. The meeting was adjourned at 7:50 PM.

Respectfully submitted,

Rachael Moore

# JUNE BIRTHDAYS

Mona Sparacello	Jun 1	Allen Dauterive	Jun 17
Tara Boynes	Jun 2	Perry Cole	Jun 21
David Rees	Jun 3	Brad Growden	Jun 22
Justin Greenleaf	Jun 4	Donna Hoblack	Jun 23
Bob Mueller	Jun 4	Ruth Sandifer	Jun 23
Mandy Slye	Jun 5	Grace Schneider	Jun 25
Lisa Greenleaf	Jun 9	Gloria M. Cox	Jun 25
C.J. Mehle	Jun 11	Louis Pellerin	Jun 25
Janet Clark	Jun 16	Trudy Miller	Jun 25
		Marlene Mehle	Jun 27



# JUNE ANNIVERSARIES

Jun 1	Mike & Sue Streicher	54 years
Jun 4	Charles & Kathy Colbert	34 years
Jun 6	Jack & Brenda Tolley	53 years
Jun 12	George & Janet Michell	57 years
Jun 13	Jason & Jeanette Mayo	13 years
Jun 16	Jack & Nancy Anderson	43 years
Jun 25	Louann & Charles Stone	49 years
Jun 27	Douglas & Ashley Burbank	30 years
Jun 30	Steve & Lisa Beene	21 years